

Jessica Ott - Animation Showreel Shot List.

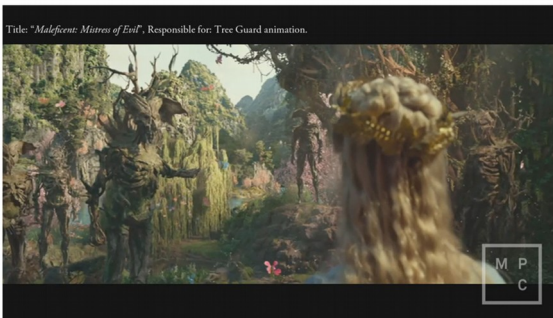
+44 (0) 7908-609-029 jessica.ott009@googlemail.com www.jessicaott.co.uk <https://vimeo.com/102826235>



Disney's Mufasa The Lion King –
directed by Barry Jenkins.
MPC, London.
shots 1 to 11 camera and key frame animation for all
characters.
Software: Autodesk Maya.



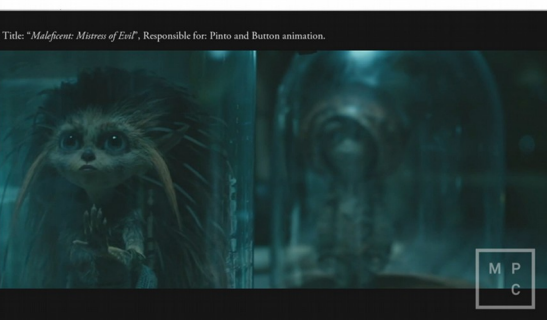
Clifford the Big Red Dog - directed by Walt Becker.
MPC, London
shots 12-13 Key frame animation for puppy Clifford.
Software: Autodesk Maya



Disney's Maleficent: Mistress of Evil –
directed by Joachim Ronning
MPC, London.
shot 14 mocap animation for background treeguards
and key frame animation for foreground treeguard.
Software: Autodesk Maya.



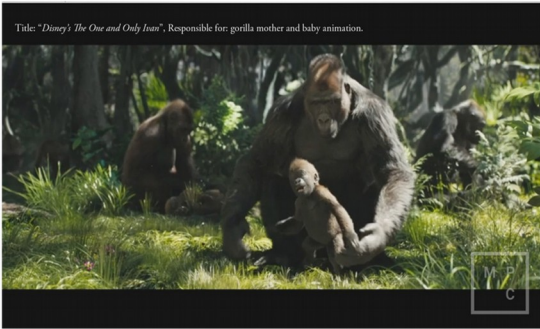
Disney's Maleficent: Mistress of Evil –
directed by Joachim Ronning
MPC, London.
shot 15 mocap animation for treeguards, foreground mushroom,
dandelion and dew faeries and key frame animation for
central treeguard.
Software: Autodesk Maya.



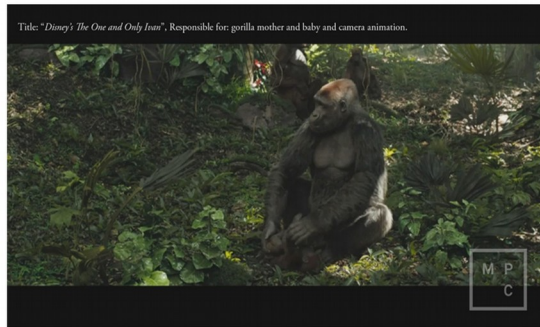
Disney's Maleficent: Mistress of Evil –
directed by Joachim Ronning
MPC, London.
Shot 16
mocap animation for body and face for both Pinto and Button.
Software: Autodesk Maya.

Jessica Ott - Animation Showreel Shot List.

+44 (0) 7908-609-029 jessica.ott009@googlemail.com www.jessicaott.co.uk https://vimeo.com/102826235



Disneys The One and Only Ivan - directed by Thea Sharrock MPC. London.
Shot 17 keyframe animation for foreground mother and baby
Software: Autodesk Maya.



Disneys The One and Only Ivan - directed by Thea Sharrock MPC. London.
Shot 18 keyframe animation for foreground mother and baby
also plate retime and camera animation.
Software: Autodesk Maya.



Not my Life: December 2014. iAnimate Workshop 4:
Close up Facial Acting and Lip Sync. Assignment 2.
Responsible for: Character Animation.
Software: Autodesk Maya.



Faded Image: December 2014. iAnimate Workshop 4:
Close up Facial Acting and Lip Sync. Assignment 1.
Responsible for: Character Animation.
Software: Autodesk Maya.

Online Life drawing – New Masters Academy and MPC

